



BROADSTONE CORONADO

ON THE BAY

TRUE BLUE

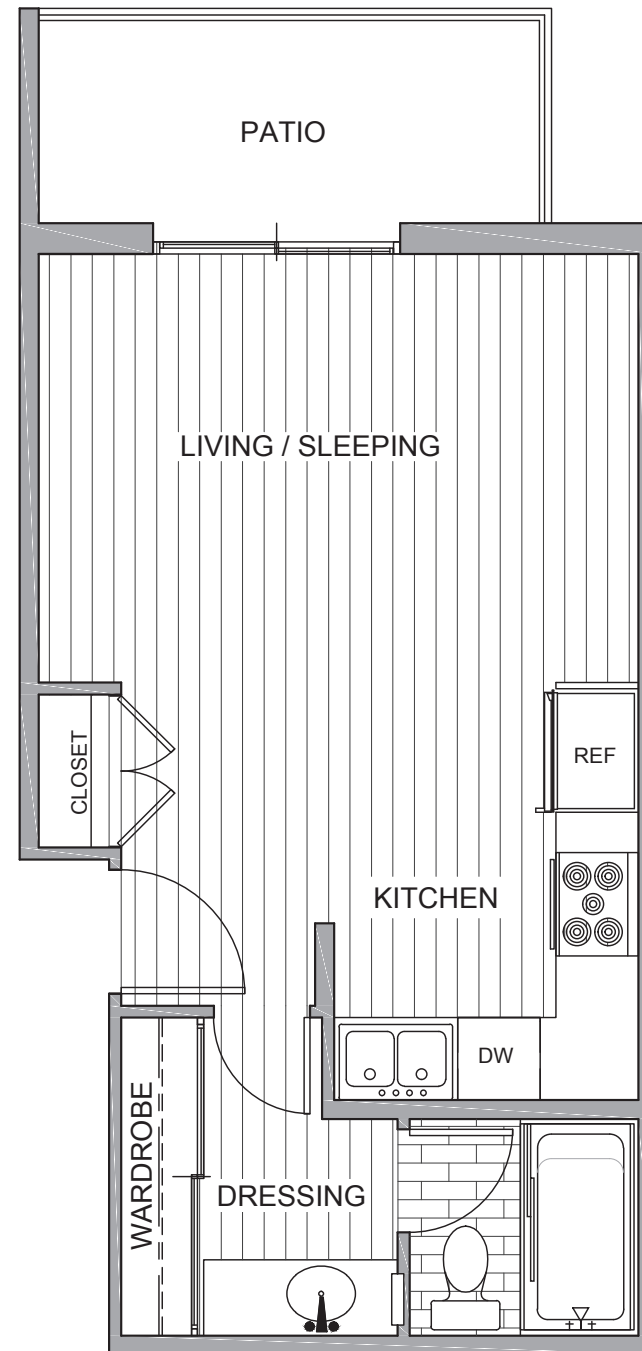
Studio : 1 Bath : Patio

405 Sq.ft.*

AMENITIES

- Redesigned and renovated Resident Clubhouse featuring a fireside retreat, complimentary coffee bar, billiards tables, community library and social lounge
- Entertaining Kitchen with group seating
- Club-Level Fitness Studio equipped with state-of-the-art Technogym cardio and weight training equipment, free weights and a boxing ring
- Private yoga and dance studio with Fitness-On-Demand classes
- Golf Simulator including championship golf courses and tracking and trajectory analysis
- Executive Business Center including Mac and PC computers with a professional printer
- Movie Theatre featuring mega-size high definition projector screen, tiered lounge seating and blackout shades
- Game Room with two TV's, Xbox and Nintendo
- Massage Therapy and Spa Suite
- Conference Rooms with seating for up to eight guests and presentation capabilities
- Arts & Crafts Room for creative hobbies
- Complimentary Wi-Fi
- Onsite Management
- Guest Suites

*Square footage is approximate and layouts may vary.



844.209.0030 : BroadstoneBay.com

The owner and management company for Broadstone Coronado on the Bay comply fully with the provisions of the Equal Housing Opportunity laws and nondiscrimination laws. The Apartment Homes have been designed and constructed to be accessible in accordance with these laws. The floor plans, site plans, and elevations are approximate and should not be relied on for exact dimensions.



BROADSTONE CORONADO

ON THE BAY

PADRE BLUE

1 Bed : 1 Bath : Patio

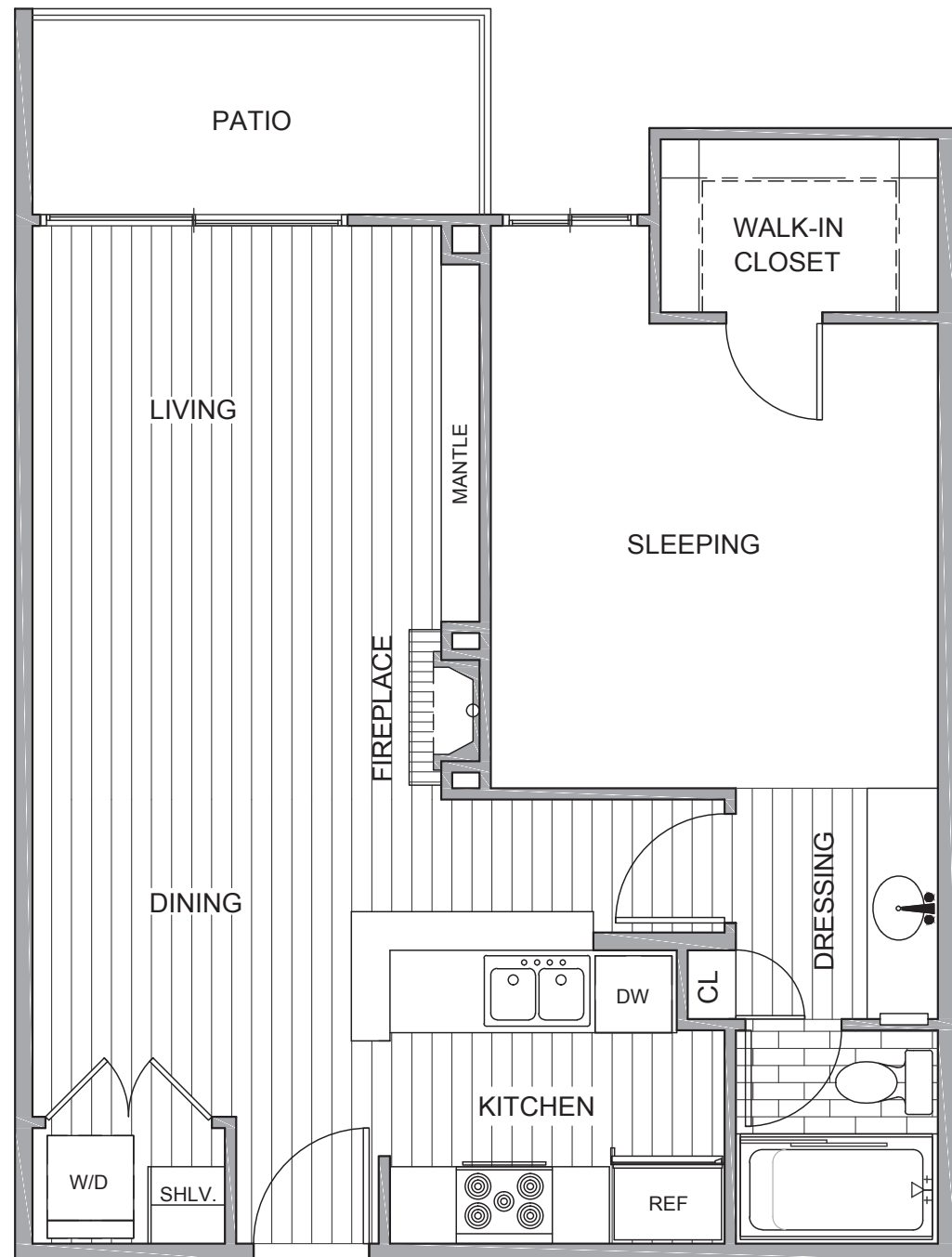
664 Sq.ft.*

HIGHLIGHTS

- Panoramic views of San Diego Bay**
- Spacious studio, one bedroom and two bedroom floor plans featuring three designer color palettes
- Wood plank style flooring
- Gourmet kitchens with quartz or granite counters and full-height decorative tile backsplash
- Frigidaire Gallery stainless steel appliances with five-burner electric range
- European style cabinets and upgraded fixtures
- Whirlpool full size front-loading washer and gas dryer**
- Designer marble bathroom countertops with Porcelanosa Spanish tile flooring
- Built-in full length mirrors inlaid into master bedroom door**
- Charming designer vanities with framed mirror
- Glowing fireplace**
- Large walk-in closets**
- Linen pantry and coat closets for ample storage
- Air conditioning
- Plantation shutters
- Personal patios and balconies

*Square footage is approximate and layouts may vary.

**Featured in many select units.



844.209.0030 : BroadstoneBay.com

The owner and management company for Broadstone Coronado on the Bay comply fully with the provisions of the Equal Housing Opportunity laws and nondiscrimination laws. The Apartment Homes have been designed and constructed to be accessible in accordance with these laws. The floor plans, site plans, and elevations are approximate and should not be relied on for exact dimensions.



BROADSTONE CORONADO

ON THE BAY

COBALT BLUE

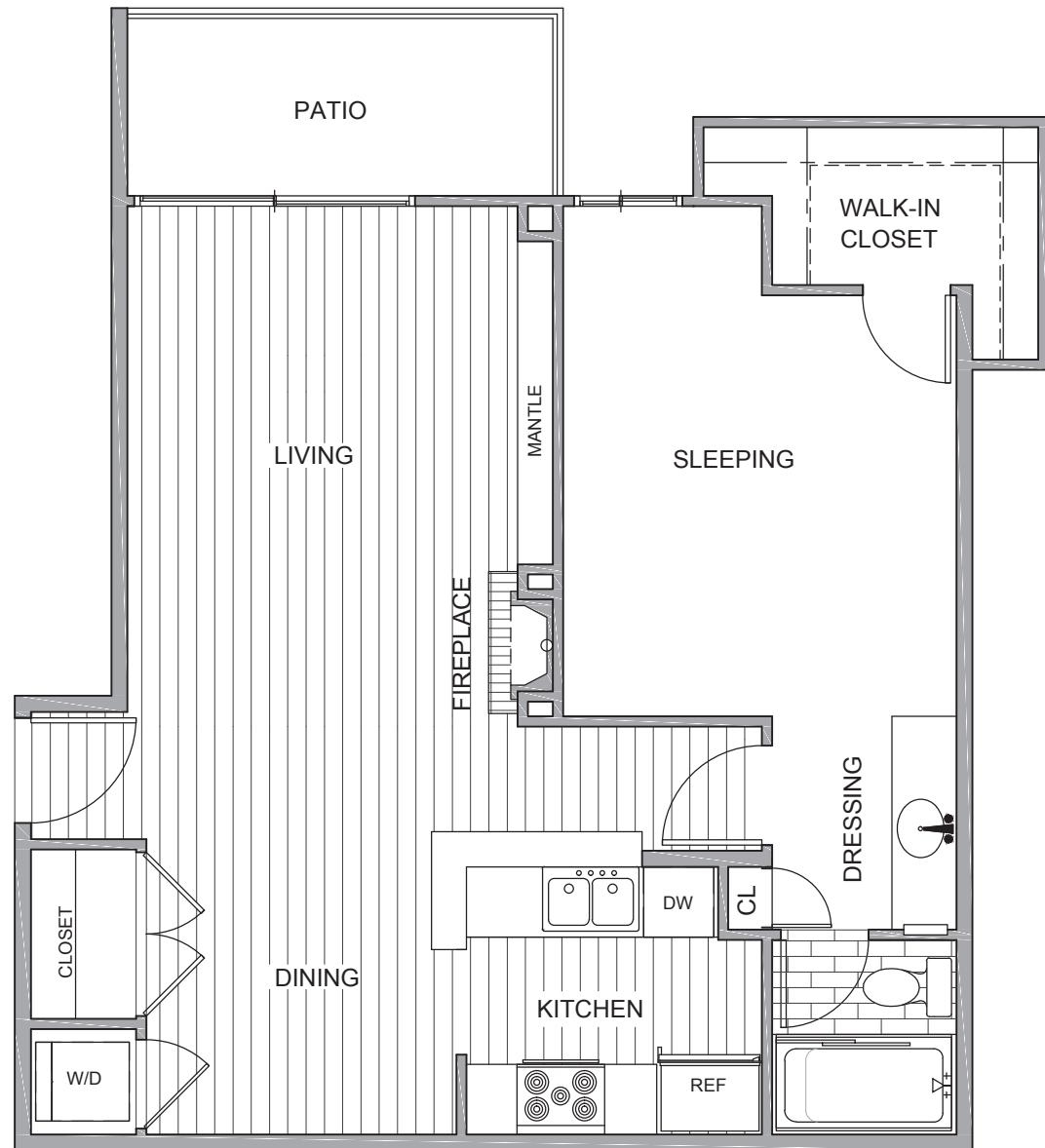
1 Bed : 1 Bath : Patio

750 Sq.ft.*

AMENITIES

- Redesigned and renovated Resident Clubhouse featuring a fireside retreat, complimentary coffee bar, billiards tables, community library and social lounge
- Entertaining Kitchen with group seating
- Club-Level Fitness Studio equipped with state-of-the-art Technogym cardio and weight training equipment, free weights and a boxing ring
- Private yoga and dance studio with Fitness-On-Demand classes
- Golf Simulator including championship golf courses and tracking and trajectory analysis
- Executive Business Center including Mac and PC computers with a professional printer
- Movie Theatre featuring mega-size high definition projector screen, tiered lounge seating and blackout shades
- Game Room with two TV's, Xbox and Nintendo
- Massage Therapy and Spa Suite
- Conference Rooms with seating for up to eight guests and presentation capabilities
- Arts & Crafts Room for creative hobbies
- Complimentary Wi-Fi
- Onsite Management
- Guest Suites

*Square footage is approximate and layouts may vary.



844.209.0030 : BroadstoneBay.com

The owner and management company for Broadstone Coronado on the Bay comply fully with the provisions of the Equal Housing Opportunity laws and nondiscrimination laws. The Apartment Homes have been designed and constructed to be accessible in accordance with these laws. The floor plans, site plans, and elevations are approximate and should not be relied on for exact dimensions.



BROADSTONE CORONADO

ON THE BAY

ULTRAMARINE BLUE

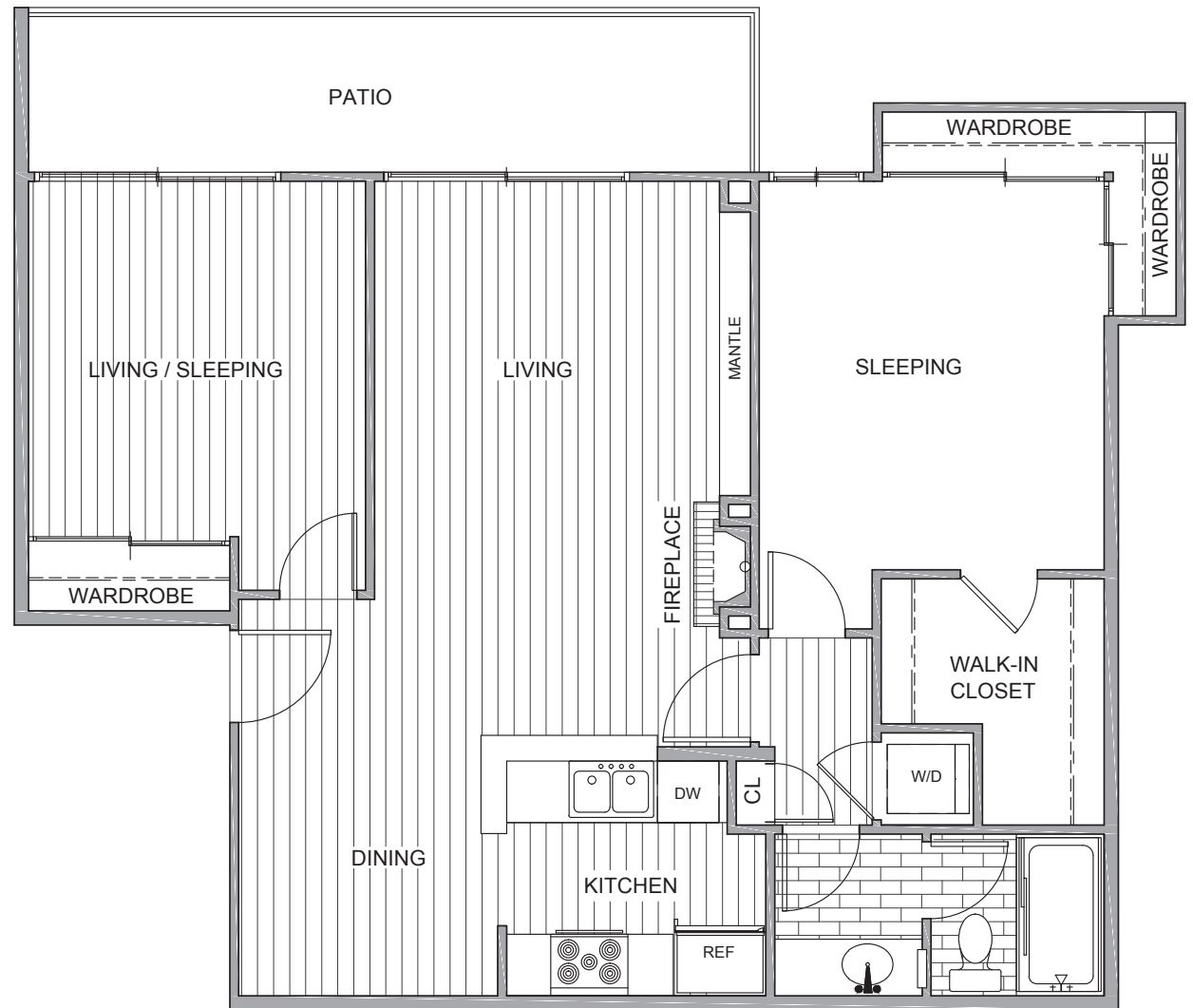
2 Bed : 1 Bath : Patio
845 Sq.ft.*

HIGHLIGHTS

- Panoramic views of San Diego Bay**
- Spacious studio, one bedroom and two bedroom floor plans featuring three designer color palettes
- Wood plank style flooring
- Gourmet kitchens with quartz or granite counters and full-height decorative tile backsplash
- Frigidaire Gallery stainless steel appliances with five-burner electric range
- European style cabinets and upgraded fixtures
- Whirlpool full size front-loading washer and gas dryer**
- Designer marble bathroom countertops with Porcelanosa Spanish tile flooring
- Built-in full length mirrors inlaid into master bedroom door**
- Charming designer vanities with framed mirror
- Glowing fireplace**
- Large walk-in closets**
- Linen pantry and coat closets for ample storage
- Air conditioning
- Plantation shutters
- Personal patios and balconies

*Square footage is approximate and layouts may vary.

**Featured in many select units.



844.209.0030 : BroadstoneBay.com

The owner and management company for Broadstone Coronado on the Bay comply fully with the provisions of the Equal Housing Opportunity laws and nondiscrimination laws. The Apartment Homes have been designed and constructed to be accessible in accordance with these laws. The floor plans, site plans, and elevations are approximate and should not be relied on for exact dimensions.



BROADSTONE CORONADO

ON THE BAY

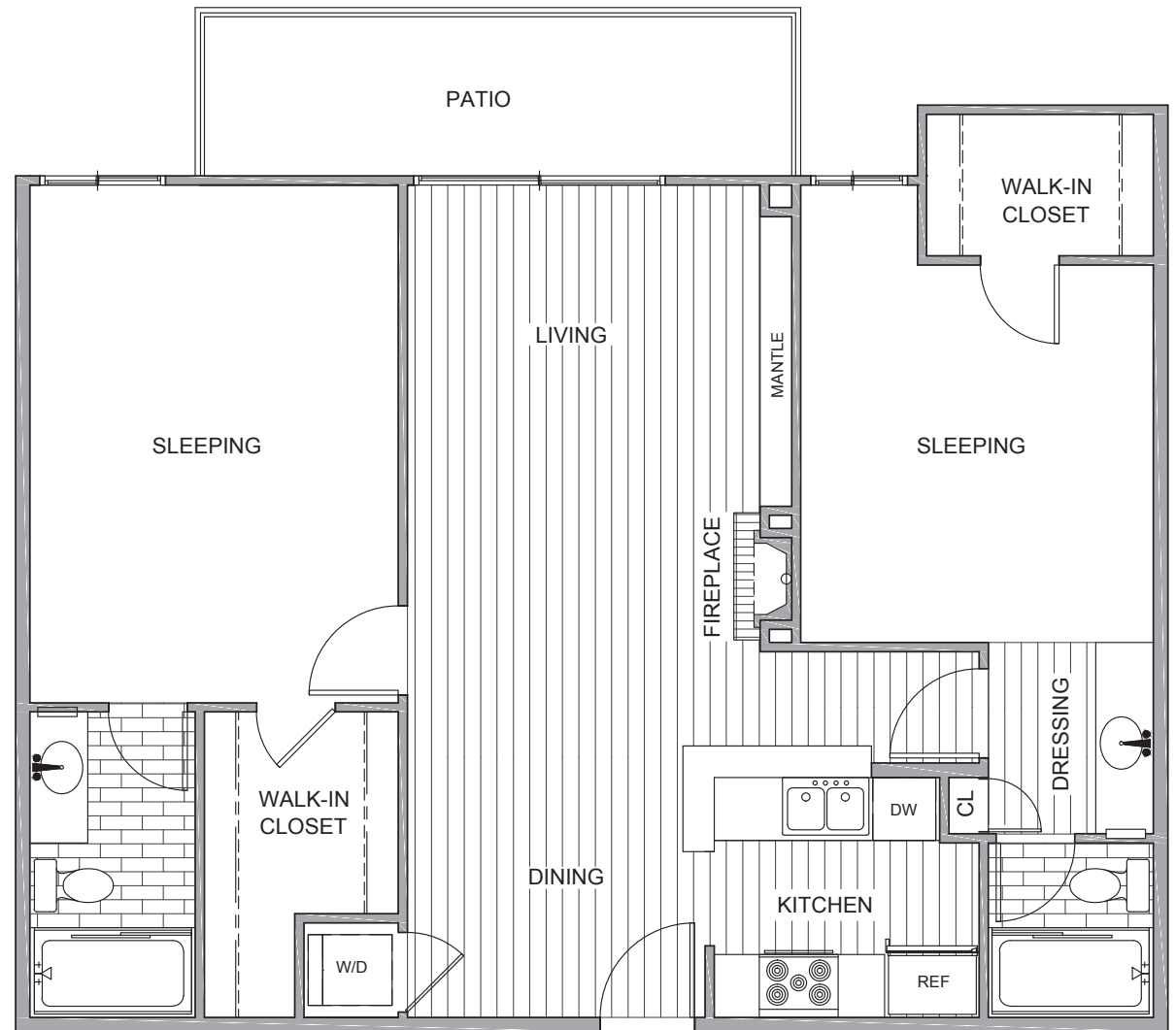
ROYAL BLUE

2 Bed : 2 Bath : Patio
989 Sq.ft.*

AMENITIES

- Redesigned and renovated Resident Clubhouse featuring a fireside retreat, complimentary coffee bar, billiards tables, community library and social lounge
- Entertaining Kitchen with group seating
- Club-Level Fitness Studio equipped with state-of-the-art Technogym cardio and weight training equipment, free weights and a boxing ring
- Private yoga and dance studio with Fitness-On-Demand classes
- Golf Simulator including championship golf courses and tracking and trajectory analysis
- Executive Business Center including Mac and PC computers with a professional printer
- Movie Theatre featuring mega-size high definition projector screen, tiered lounge seating and blackout shades
- Game Room with two TV's, Xbox and Nintendo
- Massage Therapy and Spa Suite
- Conference Rooms with seating for up to eight guests and presentation capabilities
- Arts & Crafts Room for creative hobbies
- Complimentary Wi-Fi
- Onsite Management
- Guest Suites

*Square footage is approximate and layouts may vary.



844.209.0030 : BroadstoneBay.com

The owner and management company for Broadstone Coronado on the Bay comply fully with the provisions of the Equal Housing Opportunity laws and nondiscrimination laws. The Apartment Homes have been designed and constructed to be accessible in accordance with these laws. The floor plans, site plans, and elevations are approximate and should not be relied on for exact dimensions.



BROADSTONE CORONADO

ON THE BAY

NAVY BLUE

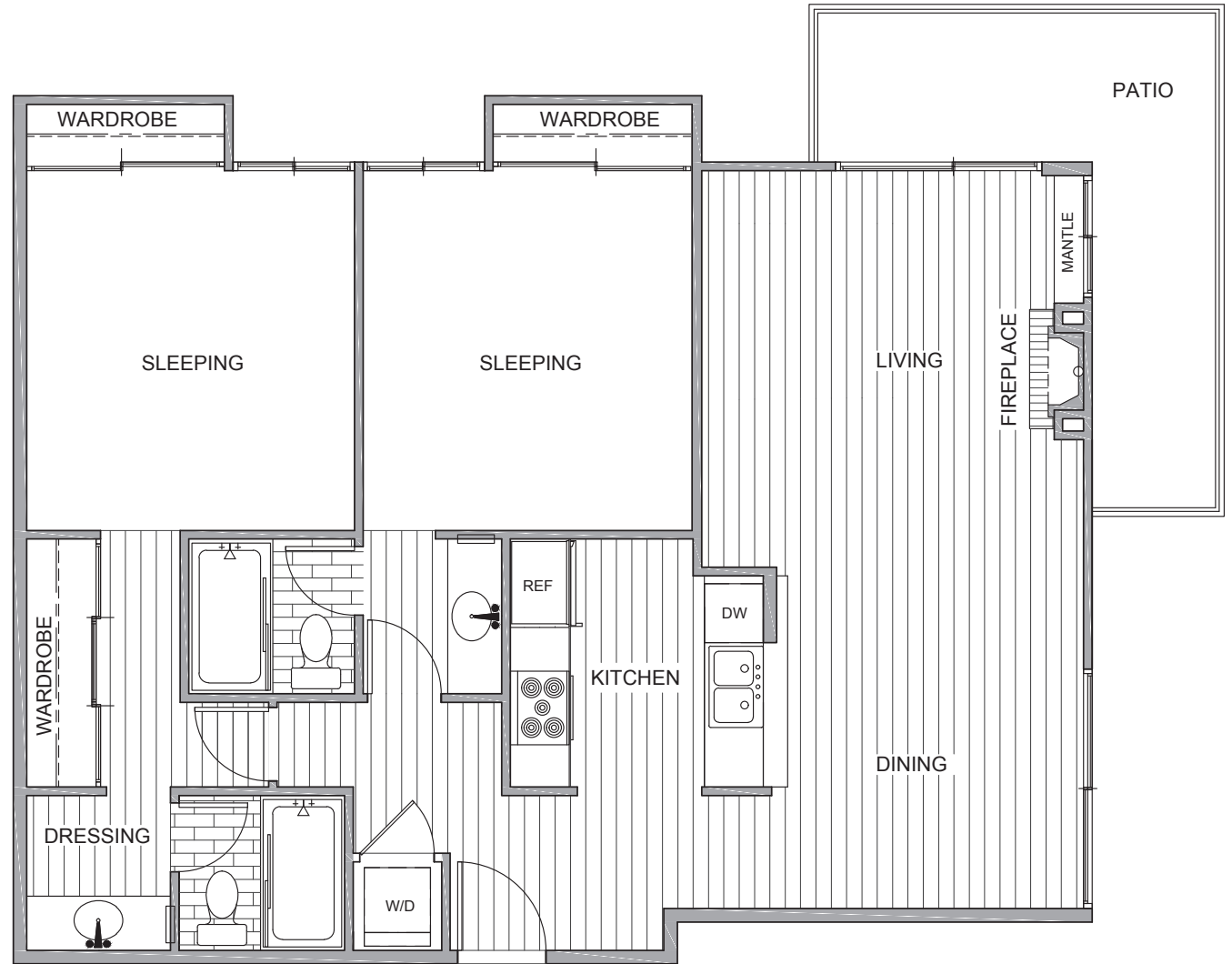
2 Bed : 2 Bath : Patio
995 Sq.ft.*

HIGHLIGHTS

- Panoramic views of San Diego Bay**
- Spacious studio, one bedroom and two bedroom floor plans featuring three designer color palettes
- Wood plank style flooring
- Gourmet kitchens with quartz or granite counters and full-height decorative tile backsplash
- Frigidaire Gallery stainless steel appliances with five-burner electric range
- European style cabinets and upgraded fixtures
- Whirlpool full size front-loading washer and gas dryer**
- Designer marble bathroom countertops with Porcelanosa Spanish tile flooring
- Built-in full length mirrors inlaid into master bedroom door**
- Charming designer vanities with framed mirror
- Glowing fireplace**
- Large walk-in closets**
- Linen pantry and coat closets for ample storage
- Air conditioning
- Plantation shutters
- Personal patios and balconies

*Square footage is approximate and layouts may vary.

**Featured in many select units.



844.209.0030 : BroadstoneBay.com

The owner and management company for Broadstone Coronado on the Bay comply fully with the provisions of the Equal Housing Opportunity laws and nondiscrimination laws. The Apartment Homes have been designed and constructed to be accessible in accordance with these laws. The floor plans, site plans, and elevations are approximate and should not be relied on for exact dimensions.



BROADSTONE CORONADO

ON THE BAY

CAPRI BLUE

2 Bed : 2 Bath : Patio
1,063 Sq.ft.*

AMENITIES

- Redesigned and renovated Resident Clubhouse featuring a fireside retreat, complimentary coffee bar, billiards tables, community library and social lounge
- Entertaining Kitchen with group seating
- Club-Level Fitness Studio equipped with state-of-the-art Technogym cardio and weight training equipment, free weights and a boxing ring
- Private yoga and dance studio with Fitness-On-Demand classes
- Golf Simulator including championship golf courses and tracking and trajectory analysis
- Executive Business Center including Mac and PC computers with a professional printer
- Movie Theatre featuring mega-size high definition projector screen, tiered lounge seating and blackout shades
- Game Room with two TV's, Xbox and Nintendo
- Massage Therapy and Spa Suite
- Conference Rooms with seating for up to eight guests and presentation capabilities
- Arts & Crafts Room for creative hobbies
- Complimentary Wi-Fi
- Onsite Management
- Guest Suites

*Square footage is approximate and layouts may vary.



844.209.0030 : BroadstoneBay.com

The owner and management company for Broadstone Coronado on the Bay comply fully with the provisions of the Equal Housing Opportunity laws and nondiscrimination laws. The Apartment Homes have been designed and constructed to be accessible in accordance with these laws. The floor plans, site plans, and elevations are approximate and should not be relied on for exact dimensions.